

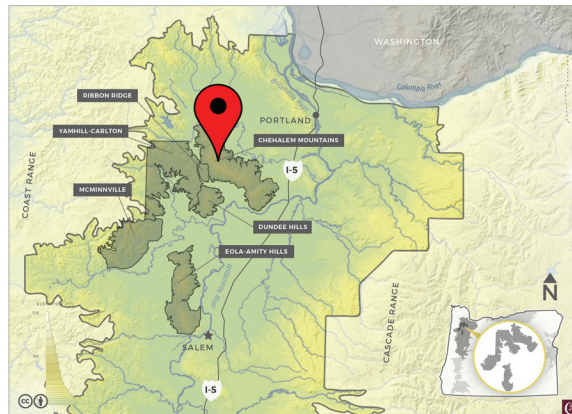


THREE FEATHERS ESTATE & VINEYARD

In the heart of the Chehalem Mountains, at the Northern end of The Willamette Valley, Three Feathers high-elevation vineyards are part of Oregon's most recognized appellation of cool climate wines.

Our 155-acre Estate comprises rolling hills from 700 - 1000 ft in elevation which form a natural heat sink, sheltered from winds and capturing summer warmth in its own natural microclimate. Ancient marine soils and respectful farming practices result in rare wines that embody this distinctive region and each growing season.

At Three Feathers Estate & Vineyard, we produce handcrafted small-lot wines using only grapes grown on the Estate. Our passion for growing and commitment to authenticity contribute to our mission of creating the best Oregon wines that reflect our terroir.



2021 Madeleine

VARIETAL	100% Pinot Noir
CLONES	Précoce
APELLATION	100% Chehalem Mountains Laurelwood District sub-AVA
VINEYARD	Torio Vineyard
ALCOHOL	13.5%
HARVEST DATE	September 2021
SUGAR	23 Brix
AGING	10 months neutral French oak
PRODUCTION	100 cases

AROMAS AND FLAVORS

This early-ripening clone of Pinot Noir presents a balanced acidity and long finish with notes of bramble-berry, raspberry and cherry.

THE VINTAGE

A rare, old-world clone of Pinot Noir, known as Pinot Noir Précoce, Pinot Madeleine, Frühburgunder, this grape has smaller berries and ripens a full two weeks earlier than standard Pinot Noir. Concentrated flavors and elegant aromatics define our second vintage.

The grapes are from our Torio Vineyard site at 1,200 feet in elevation.