

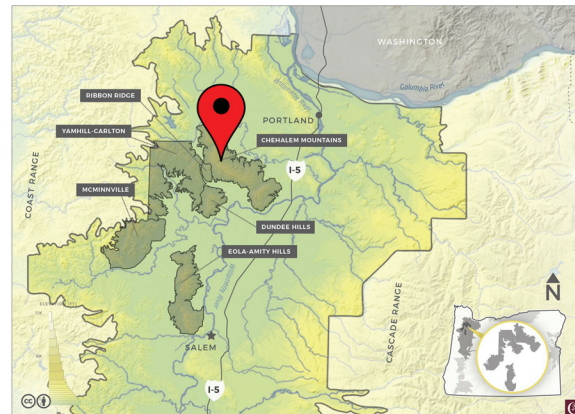


THREE FEATHERS ESTATE & VINEYARD

In the heart of the Chehalem Mountains, at the Northern end of The Willamette Valley, Three Feathers high-elevation vineyards are part of Oregon's most recognized appellation of cool climate wines.

Our 155-acre Estate comprises rolling hills from 700 - 1000 ft in elevation which form a natural heat sink, sheltered from winds and capturing summer warmth in its own natural microclimate. Ancient marine soils and respectful farming practices result in rare wines that embody this distinctive region and each growing season.

At Three Feathers Estate & Vineyard, we produce handcrafted small-lot wines using only grapes grown on the Estate. Our passion for growing and commitment to authenticity contribute to our mission of creating the best Oregon wines that reflect our terroir.



THREEFEATHERSESTATE.COM | 503.536.3083

2020 Madeleine

VARIETAL	100% Pinot Noir
CLONES	Pinot Noir Précoce
APPELLATION	Chehalem Mountains Laurelwood District AVA
VINEYARD	Torio Vineyard
ALCOHOL	12%
HARVEST DATE	October 2020
SUGAR	22.1 Brix
pH	3.37
AGING	10 months neutral French oak
PRODUCTION	100 cases
RATINGS	90 Points from James Suckling

AROMAS AND FLAVORS

*This rare, early-ripening clone of Pinot Noir presents a balanced acidity and long finish. **James Suckling 90 POINTS** "Some sliced-strawberry and citrus aromas and flavors. Medium body. Light hibiscus-water and green-strawberry flavors."*

THE VINTAGE

2020 was an excellent growing season on Chehalem Mountains. Following bud break, we had dry weather for the next 10 weeks; the only rain came mid-September and harvest was sunny and clear.

A rare, old-world clone of Pinot Noir, known as Pinot Noir Précoce, Pinot Madeleine, Frühburgunder, this grape has smaller berries and ripens a full two weeks earlier than standard Pinot Noir. We have used 25% whole cluster in this wine to add complexity.

The grapes are from our Torio Vineyard site at 1,200 feet in elevation.